



Temperature@lert Cellular Edition

Low cost, easy to use cellular network based protection for you or your company's valuable data, equipment, property and materials

Overview

Temperature@lert Cellular Edition is a low cost, easy to install, easy to use cellular temperature sensing and alerting device that can be used to protect widely distributed property and sensitive materials, **particularly** where network access is limited or unavailable.

How it works

Using GSM cellular phone networks, Temperature@lert Cellular Edition provides 24/7 monitoring to provide out of range temperature alerts to you via emails, text messages, and/or a telephone call. It will also alert you when the temperature returns to normal. You can view the current temperature, temperature history, and set your alerts all from your personal **Sensor Cloud** on Temperature@lert's website.

Should you lose power, the system will send and alert and continue to transmit for weeks on its internal back-up power supply. Our **fault-tolerant** design means if our system ever fails to hear from your device, we'll alert you right away that something's not quite right.

Cost Effective

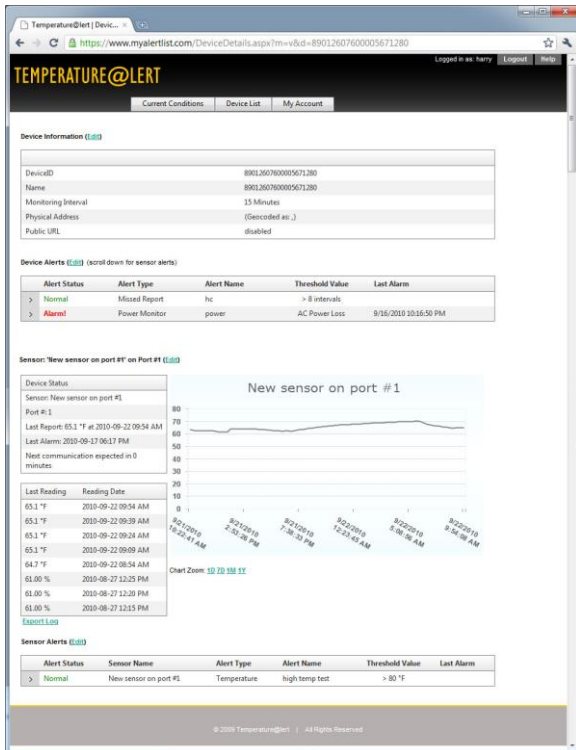
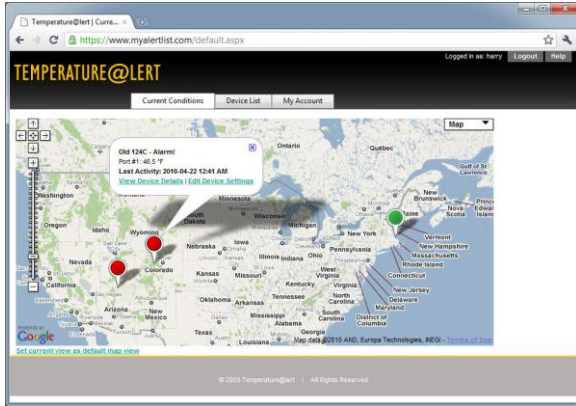
Our flat rate monthly monitoring plans start at very affordable rates. Our month-to-month service plan includes activation, wireless cellular service, alerts, **Sensor Cloud** web access, and has no cancellation or other hidden fees. We like to keep our pricing simple - just like our products.

Features & Benefits:

- Cost effective – low cost CELL400 monitors **up to four** sensor locations
- Easy to setup and use – no tech guy needed, just plug it in and it begins to transmit
- Receive emails, text and telephone alerts when the temperature goes too high or too low – take timely corrective action
- No internet or phone line needed; easy to install without costly wiring or hardware
- Data logging of temperature history and current conditions – allows retrieval of data for analysis and troubleshooting
- **AC PowerSense** alerts you when AC power is interrupted, provides an early warning of potential problems
- HealthCheck alerts you if the unit ever stops functioning
- Built in battery backup – temperature monitoring continues even if the power goes out for **up to four** weeks
- **"All clear"** message when things return to normal – puts your mind at ease
- Store & Forward Data Logging – provides a complete temperature and/or humidity log of readings that were unable to be transmitted due to lack of cellular connection
- **Full line of sensor types and configurations**

Dashboard Web-Based User Interface

Allows users to view single or multiple locations on a single screen



Each Cellular Edition Kit Includes

- Cellular Edition base station
- One 6' external temperature sensor
- Built-in rechargeable battery
- AC Wall adapter
- Unlimited technical support
- 1 year hardware warranty

FAQ's

Do I need a cellular service plan?

Yes, cost-effective plans start at \$15/month; most popular plan is \$21/month.

Are there any long term contracts or termination fees?

No. Temperature@lert's monitoring plans are month-to-month. You can cancel anytime **or just pause your service for a few months if needed.** There are no hidden fees or cancellation fees.

How does the 30-day risk free trial work?

Try Temperature@lert Cellular Edition for 30 days. If for any reason, you do not like the product, just contact us to return everything for a full refund (minus shipping charges).

Need more than 5 devices or a customized monitoring plan?

Drop us a line and we'll be happy to put something together for you that addresses your unique needs.

Specifications

Model	TM-CELL400
Dimensions	6.62" x 3.30" x 1.10"
Operating Temperature	-30°C to 70°C
Power Source	5VDC 0.5A
External Sensor Range	-55°C to 125°C
AC Power Requirement	100/240VAC, 50/60 Hz, 0.5A
Sensor Accuracy	±0.5°C Accuracy from -10°C to +85°C
Temp/Humidity Sensor Range & Accuracy	-55°C to 125°C (-67°F to 257°F) 10% to 90% RH @ Operating Temperature
Built in Sensor Jacks	4
Max Expandable Jacks	10
Maximum Sensor Cable Length	100'
Internal Battery Backup	Li-Ion 3.7V (this device must be recycled properly)
Communications	Quad Band GSM GPRS